

Date Installed: 4-16-07

Installed by: Vernon Nagel Constr.

Inspected by:

Rex Moll

Res # 1144

Highland Ave.

Garage

Concrete Approach

Back of curb

6" plug

6" e/o 6.5' Deep

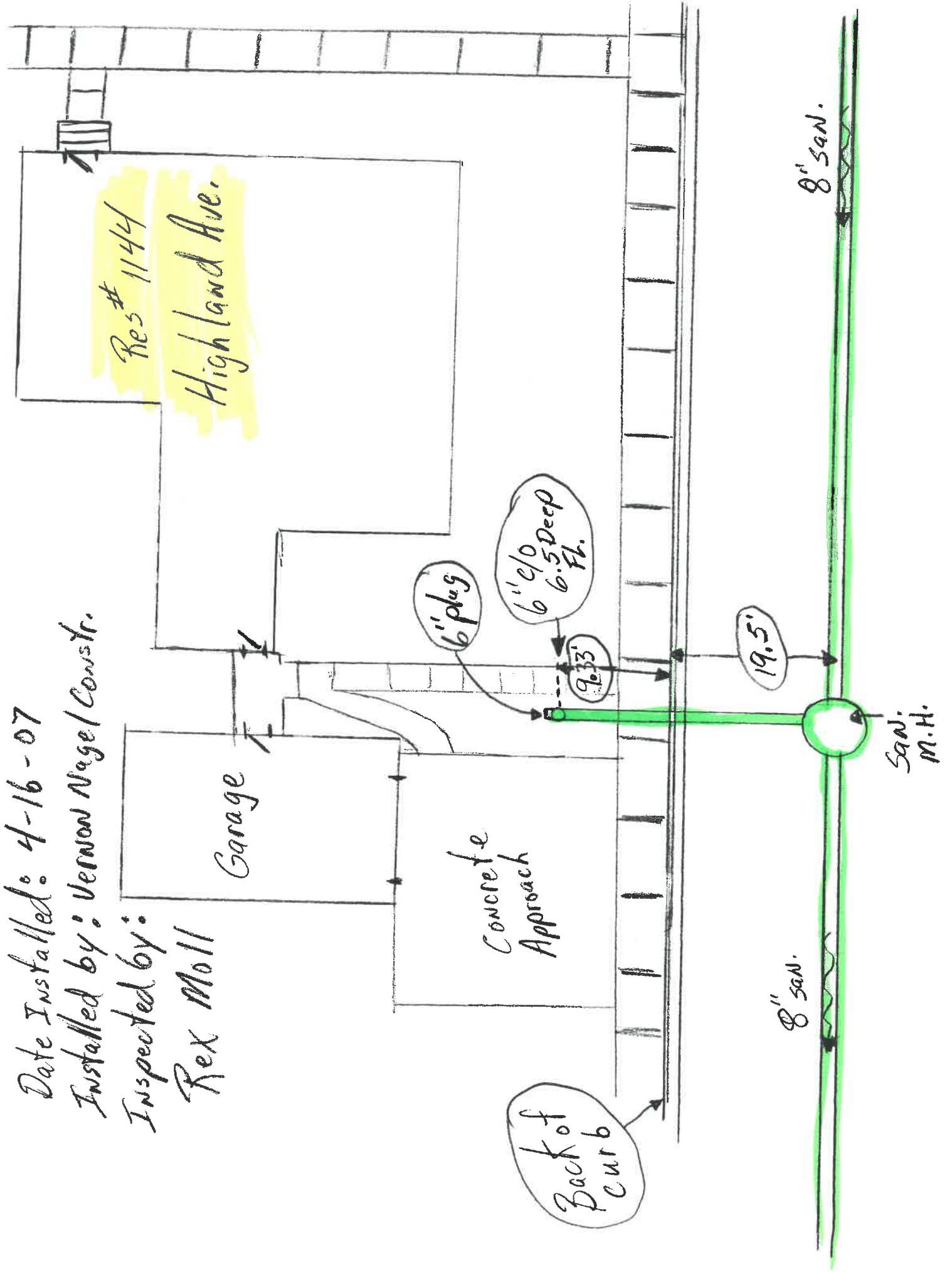
9.33'

19.5'

8" SAN.

8" SAN.

SAN. M.H.



Date Installed: 4-16-07
Installed by: Vernon Nagel Constr.
Inspected by:
Rex Moll

Res # 1144
Highland Ave.

Garage

Concrete Approach

Back of curb

6" plug

6" c/o 6.5' Deep

9.33'

19.5'

8" SAN.

8" SAN.

SAN.
M.H.

